



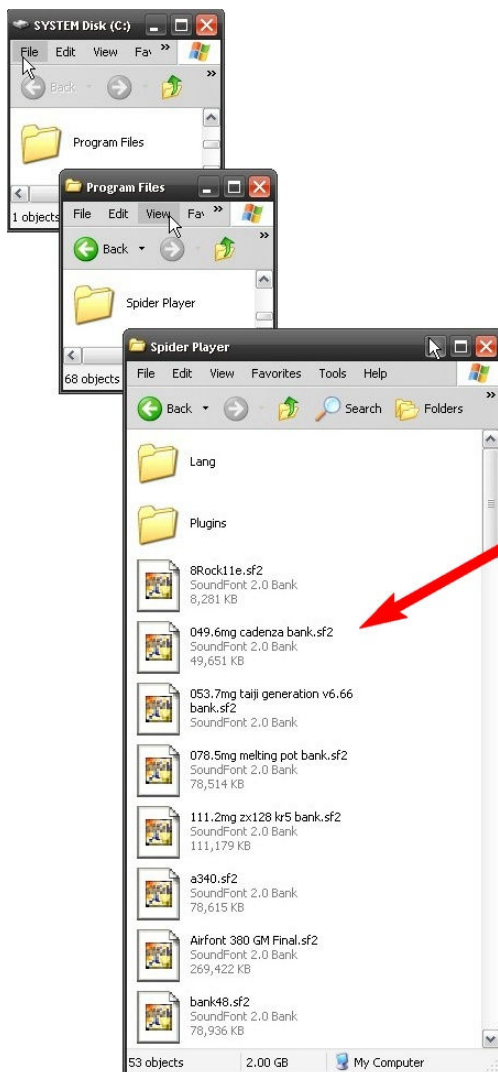
# Installing & Changing SoundFont Banks



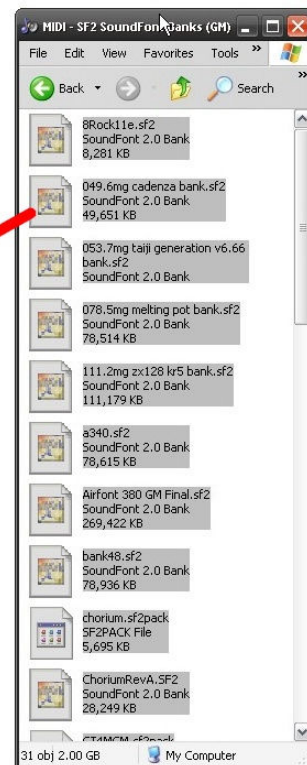
## A) Copy the SoundFont Banks into the Spider Player Folder

1. Navigate to the **Spider Player Folder** (C:/Program Files/Spider Player).
2. Select all of the **SoundFont Banks** from whatever folder you have saved them in and drag & drop them into the Spider Player folder.

### 1. Spider Player Folder



### 2. SoundFont Banks





## Installing & Changing SoundFont Banks



### B) To Change the SoundFont Bank in Spider Player

1. Click on the **MENU** button.
2. Select the **OPTIONS**.

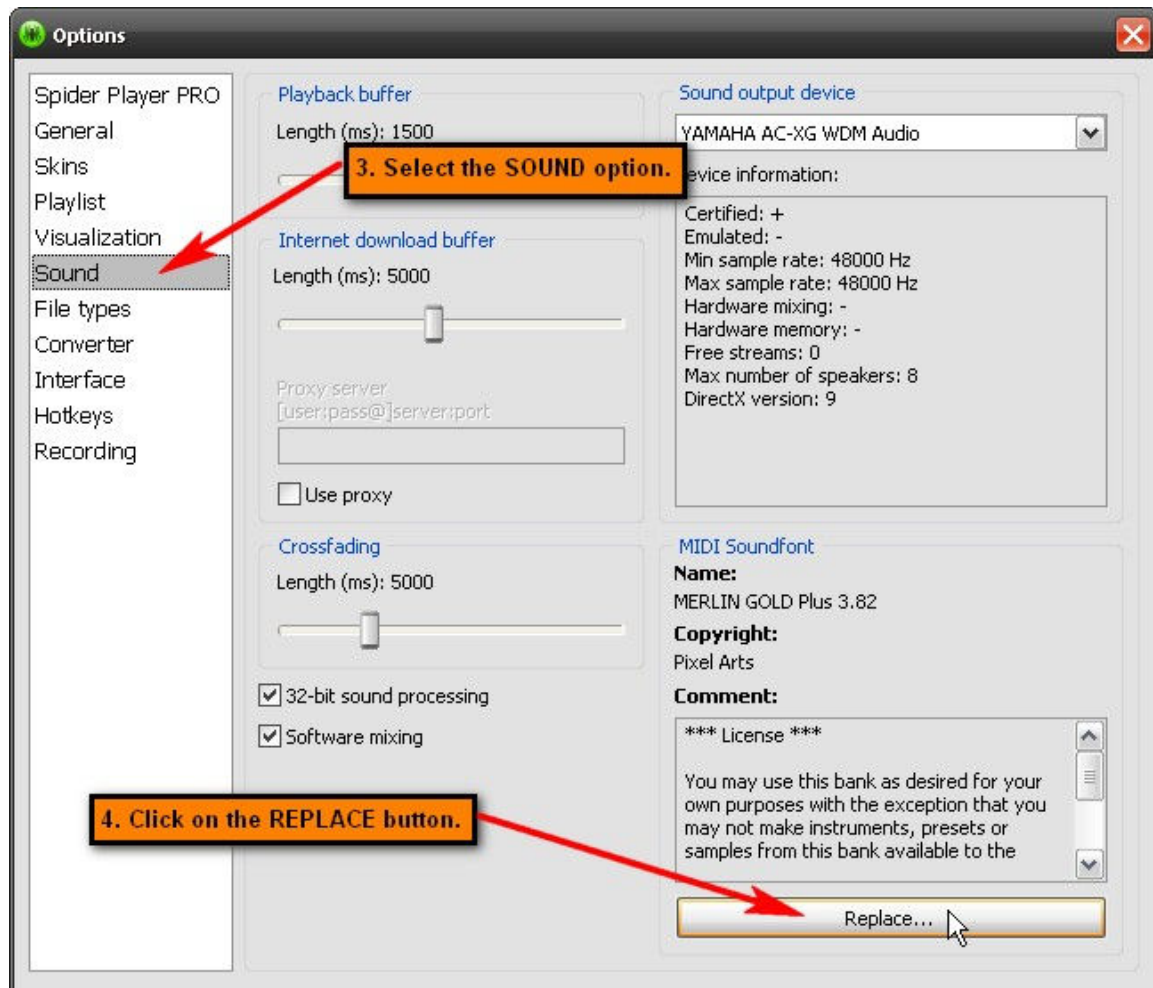




## Installing & Changing SoundFont Banks



3. Select the **SOUND** option. This displays the Sound window.
4. Click the **REPLACE** button to select a different SoundFont bank.

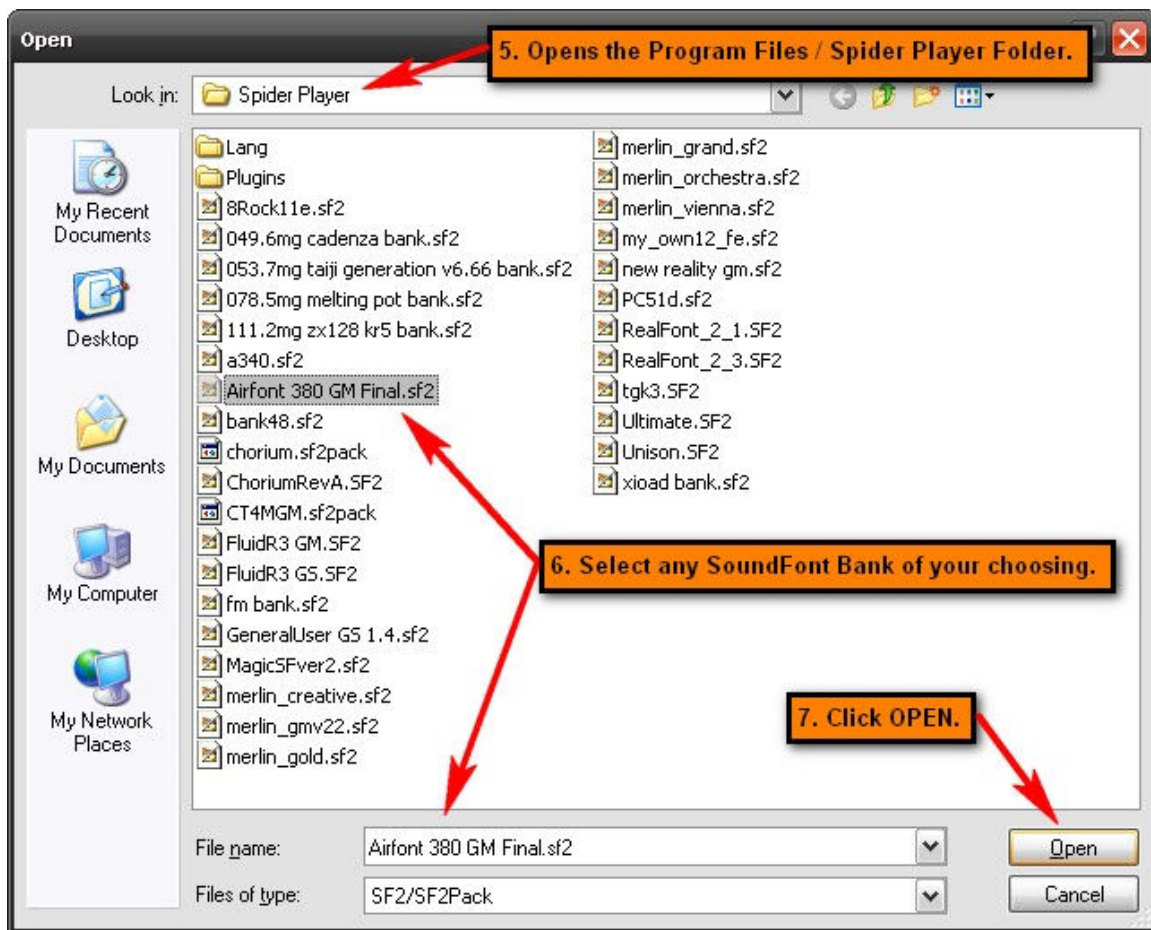




## Installing & Changing SoundFont Banks



5. This will open the **Spider Player Folder**.
6. Click on any **SoundFont Bank** you wish to use.
7. Click on the **OPEN** button to finalize your selection and return you to Spider Player.

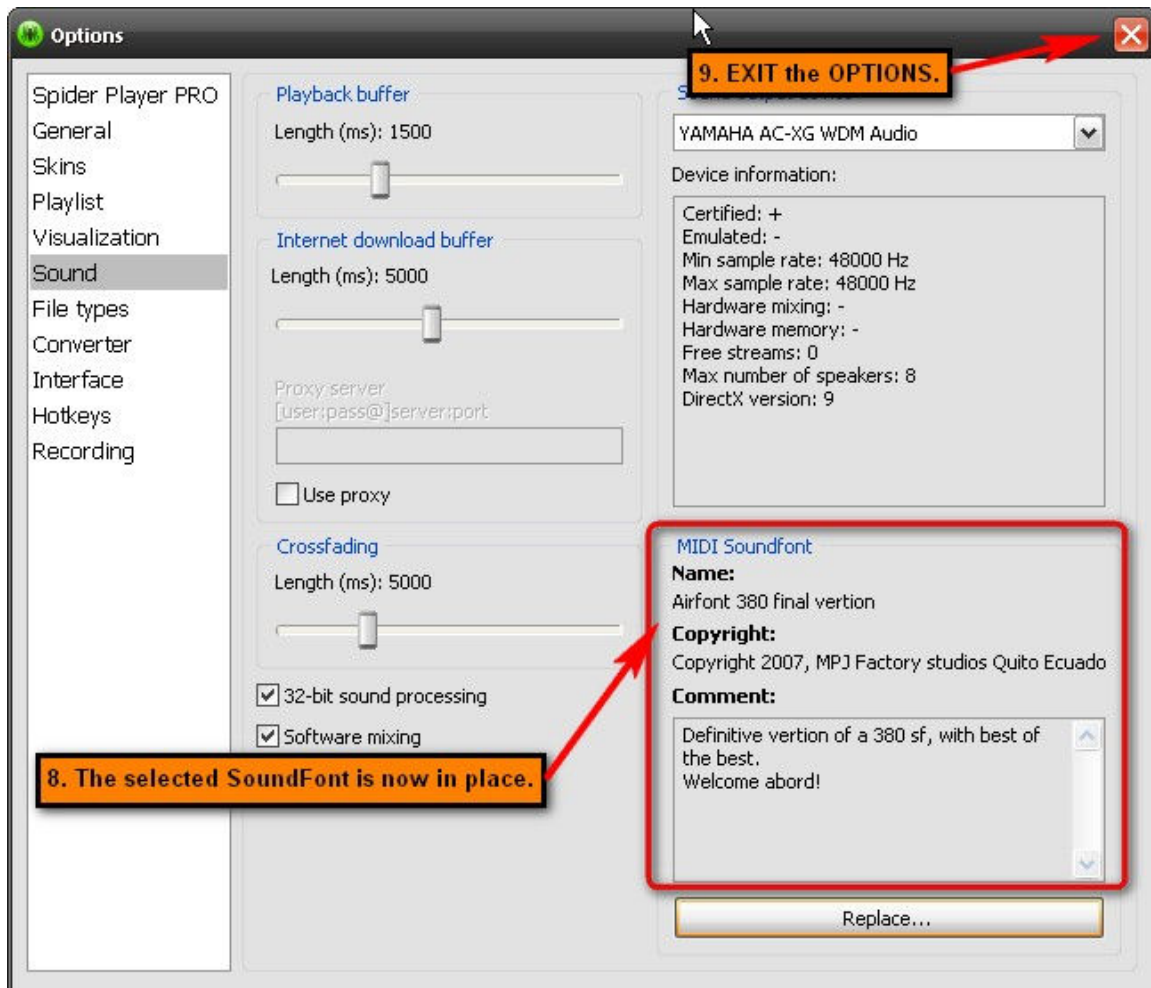




## Installing & Changing SoundFont Banks



8. Your new SoundFont bank is now the current SoundFont that Spider Player will use to play your midi music.
9. Click the **EXIT** button to return to the main Spider Player window.





## Installing & Changing SoundFont Banks



10. The new SoundFont bank is displayed in window next to the Song title when a midi file is played.



Suggestion – Try playing the same midi file with a different SoundFont Bank each time to see the difference that the various SoundFonts make to your listening experience.