



Screen One

Boot from your XP setup CD to gain access to the no-reformat reinstall option.

[next image »](#)

[close this window](#)



Screen Two

Let the CD boot proceed normally and automatically through
"Setup is inspecting your computer's hardware..."
to the "Windows Setup" screen.

[« previous image](#) | [next image »](#)

[close this window](#)



Screen Three

The "Starting Windows" screen is a bit of an overstatement; it's just the setup process getting going. Windows, as we normally think of it, isn't running yet, and no changes have been made to your PC.

[« previous image](#) | [next image »](#)

[close this window](#)



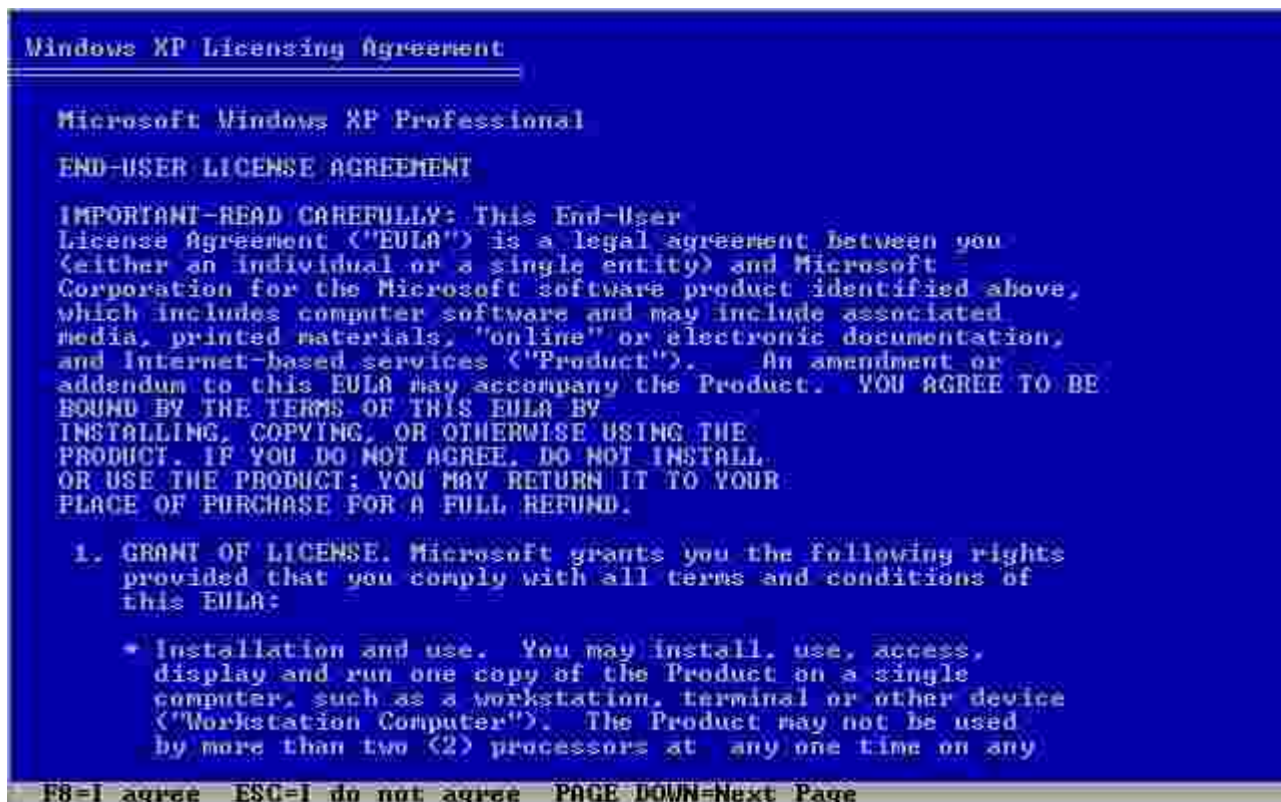
Screen Four

The "Welcome to Setup" screen is poorly worded; the "Repair" option we want isn't the one explicitly offered here. In fact, the repair option we want isn't shown at all.

[See the text for full detail.](#)

[« previous image](#) | [next image »](#)

[close this window](#)

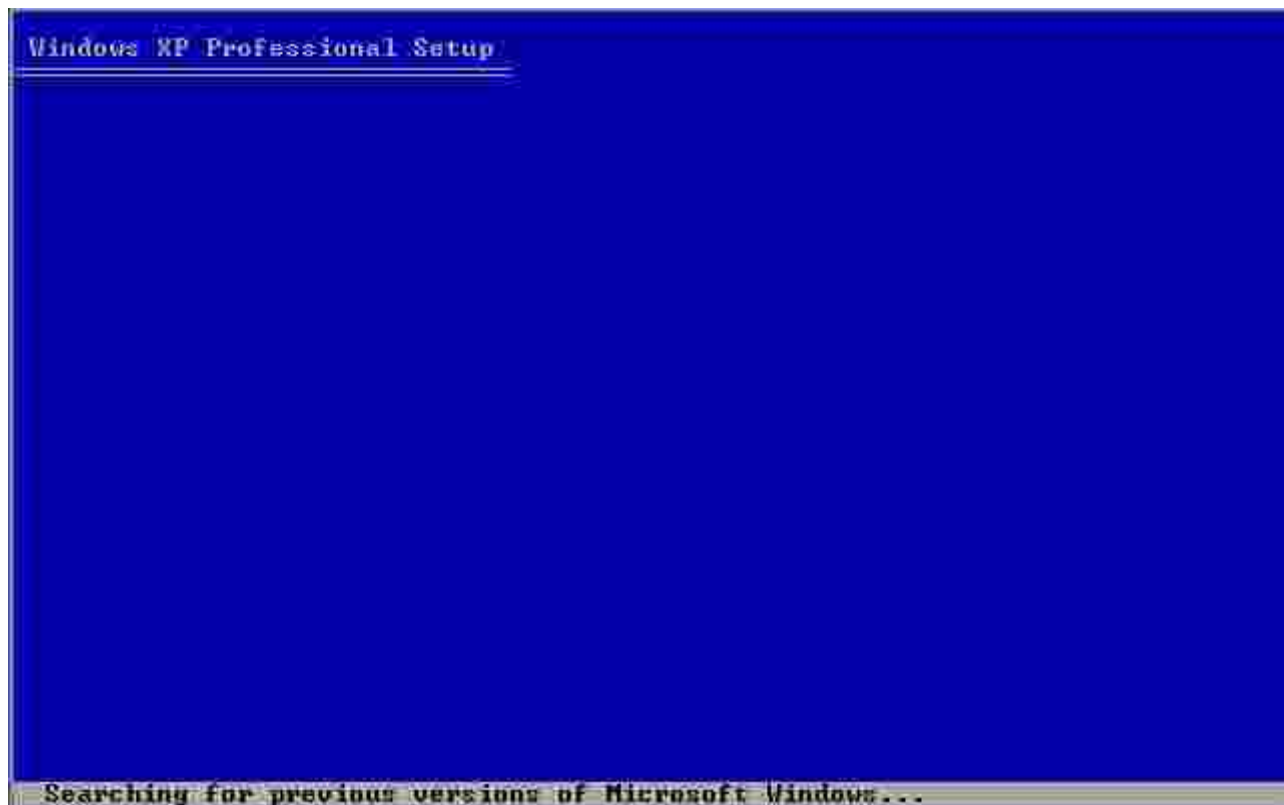


Screen Five

The licensing screen gives no indication that this is a Repair and not a brand-new, from-scratch installation. But don't be alarmed. You're on the right track.

[« previous image](#) | [next image »](#)

[close this window](#)



Screen Six

Our intent is to repair the same version of Windows as is on the setup CD, but another poorly worded screen makes it seem like you're upgrading a previous version of Windows or installing one anew. But don't let the bad wording alarm you; we're still on track for a nondestructive reinstall.

[« previous image](#) | [next image »](#)

[close this window](#)



Screen Seven

At long last, Setup begins to refer to a Repair option. Here, Setup should have found your damaged XP setup, which you can select and then press R to start the nondestructive repair.

[« previous image](#) | [next image »](#)

[close this window](#)



Screen Eight

The Repair operation replaces all potentially damaged system files with fresh copies from the CD.

[« previous image](#) | [next image »](#)

[close this window](#)



Screen Nine

There's no fanfare, but this is one of the nicer parts of the Repair process: Setup retains what it can in the current Registry so that already-installed hardware and software will remain installed.

[« previous image](#) | [next image »](#)

[close this window](#)

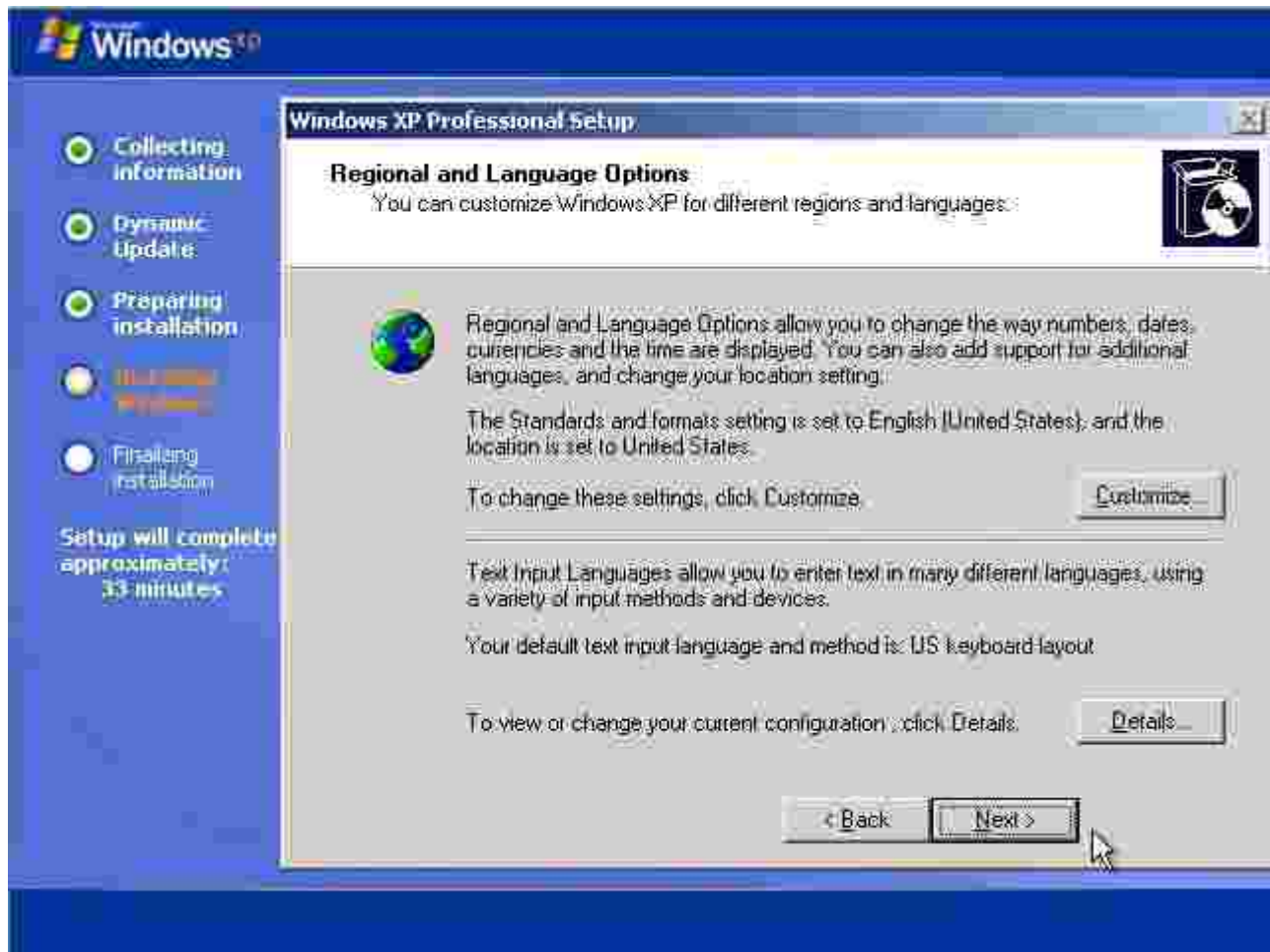


Screen Ten

With the system files freshly copied and the Registry ready for rebuilding, the system needs to reboot. Remove the CD from the drive so that the PC will boot to the hard drive instead of to the CD.

[« previous image](#) | [next image »](#)

[close this window](#)



Screen Eleven

When Setup resumes, it will appear that you're performing a full, from-scratch setup. But don't worry--you're still indeed repairing your existing version of XP.

[« previous image](#) | [next image »](#)

[close this window](#)



Screen Twelve

When Setup resumes, it will appear that you're performing a full, from-scratch setup. But don't worry--you're still indeed repairing your existing version of XP.

[« previous image](#) | [next image »](#)

[close this window](#)



Screen Thirteen

The Repair version of the setup process skips or shortens many steps because it already has the information it needs from the existing setup. For example, Repair's "installing devices" and the network setup steps are both much faster and require less user input than a new setup does.

[« previous image](#) | [next image »](#)

[close this window](#)



Screen Fourteen

Just as with "installing devices," the network setup proceeds rapidly because Setup can reuse many of the configuration details from the current installation. In fact, a Repair setup takes far less time than the installation progress bar indicates.

[« previous image](#) | [next image »](#)

[close this window](#)



Screen Fifteen

The "completing installation" screen means most of the heavy lifting is done, and you're just minutes away from finishing the repair operation.

[« previous image](#) | [next image »](#)

[close this window](#)



Screen Sixteen

With the bulk of the repair work done, your PC needs to reboot once more and will do so automatically. The reboot will take a bit longer than a standard boot, but this is normal.

[« previous image](#) | [next image »](#)

[close this window](#)



Screen Seventeen

The Repair process ends with still more screens borrowed from the full setup.

[« previous image](#) | [next image »](#)

[close this window](#)



Screen Eighteen

The final steps in the Repair process pass very quickly, and you'll soon reach the last screen in the Repair operation, a "thank you."

[« previous image](#) | [next image »](#)

[close this window](#)



Screen Nineteen

With a final, fully normal reboot, you're done. Your copy of XP should be as good as new, but with all your previously installed hardware, software, and user configuration data undamaged!

[« previous image](#)

[close this window](#)