



## LaunchBar Commander

© 2006

**Note:**

To change the product logo for your own print manual or PDF, click "Tools > Manual Designer" and modify the print manual template.

# Title page 1

**Use this page to introduce the product**

---

*by enter value here*

*This is "Title Page 1" - you may use this page to introduce your product, show title, author, copyright, company logos, etc.*

*This page intentionally starts on an odd page, so that it is on the right half of an open book from the readers point of view. This is the reason why the previous page was blank (the previous page is the back side of the cover)*

# LaunchBar Commander

© 2006

All rights reserved. No parts of this work may be reproduced in any form or by any means - graphic, electronic, or mechanical, including photocopying, recording, taping, or information storage and retrieval systems - without the written permission of the publisher.

Products that are referred to in this document may be either trademarks and/or registered trademarks of the respective owners. The publisher and the author make no claim to these trademarks.

While every precaution has been taken in the preparation of this document, the publisher and the author assume no responsibility for errors or omissions, or for damages resulting from the use of information contained in this document or from the use of programs and source code that may accompany it. In no event shall the publisher and the author be liable for any loss of profit or any other commercial damage caused or alleged to have been caused directly or indirectly by this document.

Printed: March 2017 in (wherever you are located)

## **Publisher**

...enter name...

## **Managing Editor**

...enter name...

## **Technical Editors**

...enter name...

...enter name...

## **Cover Designer**

...enter name...

## **Team Coordinator**

...enter name...

## **Production**

...enter name...

## **Special thanks to:**

*All the people who contributed to this document, to mum and dad and grandpa, to my sisters and brothers and mothers in law, to our secretary Kathrin, to the graphic artist who created this great product logo on the cover page (sorry, don't remember your name at the moment but you did a great work), to the pizza service down the street (your daily Capricciosas saved our lives), to the copy shop where this document will be duplicated, and and and...*

*Last not least, we want to thank EC Software who wrote this great help tool called HELP & MANUAL which printed this document.*

# Table of Contents

Foreword	5
<b>Part I Introduction</b>	<b>6</b>
<b>Part II Windows Vista and Windows 7 Notes</b>	<b>7</b>
<b>Part III Basic Usage</b>	<b>8</b>
1 Program Philosophy.....	8
2 Walkthrough: Creating Your First Dock.....	8
3 Resizing Docking Bars.....	9
<b>Part IV Configuring Nodes</b>	<b>10</b>
1 General Options.....	10
2 Dock Nodes.....	10
3 Menu Nodes.....	10
4 Application/Command Nodes.....	10
5 Commandline Output / File Contents Menu Nodes.....	11
6 Folder Nodes.....	12
Virtual Folders .....	12
<b>Part V Tips and Tricks</b>	<b>14</b>
1 Runtime Tips and Tricks.....	14
2 Designtime Tips and Tricks.....	14
3 Portability and Environmental Variables.....	14
4 Plugins and Tools.....	15
5 Commandline Arguements.....	16
6 Sendkeys Documentation.....	16
<b>Part VI Extra Information</b>	<b>20</b>
1 Screenshots.....	20
2 Version History and To Do List.....	20
3 Related Programs.....	33
<b>Index</b>	<b>0</b>

# Foreword

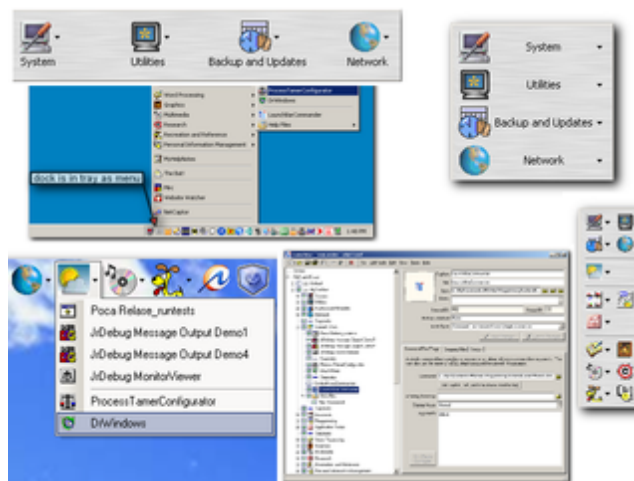
This is just another title page  
placed between table of contents  
and topics

# 1 Introduction

## LaunchBar Commander v1.153.01 - Mar 24, 2017

Requires: Microsoft Windows XP/NT/2000/9x/ME/7/10

**LaunchBar Commander** is what is commonly referred to as an "Application Launcher"; it is typically docked to the side of your screen and lets you configure buttons and menus which will launch your favorites programs.



### Features:

- Create as many "docks" as you want; each dock can also be minimized to the system tray to be used as a tray menu.
- All configurations are stored in portable configuration files - easy to move to different computers, backup, etc.
- Easily enable/disable/copy/move items using a sophisticated hierarchical tree configuration gui.
- Full drag+drop support - create new items by dragging files or programs onto a launch bar; or drag a document onto an existing button to launch the program with the file dropped.
- Lots of customization options, including skins and transparency options; customizable font style and size, labeled headers, etc.
- Advanced button and menu types - including switchable Tool Buttons, Batch Buttons, Virtual Links, etc.
- Smart shortcut processing (drag+drop and launch shortcuts and urls properly).
- Smart icon retrieval - use application icons, standalone .ico files, or even .bmp files.
- Advanced hotkey functionality -- configure submenus to pop up under cursor.

---

## 2 Windows Vista and Windows 7 Notes

### **Resizing the Docking Bars:**

To resize a docking/launch bar, click on it and use the keyboard Shift+Arrow keys. This is needed when using Windows Vista and Windows 7 as the docking bar is not draggable/resizable the way it is in Windows XP.

## 3 Basic Usage

### 3.1 Program Philosophy

LaunchBar Commander is a "launch bar" tool where you place your favorite programs and documents on a bar on your screen where you can easily run or open them.

A launch bar typically docks to one sider of your screen where it is always visible as a kind of reminder of your most useful tools, but it can also be free floating, or minimized to the system tray where it acts as a pop-up menu, visible only then you need it.

LaunchBar Commander has a slightly different focus than some other launch bar tools:

- It's designed for power users who value efficiency over eye candy - although you can choose some nice appearance skins for the program, if you are looking for a super fancy animated mac-style dock with dancing icons, LaunchBar Commander is not the tool for you.
- It's designed to store docking bar configurations in self-contained files - so you can back them up easily, move them to other computers, switch between configurations, etc.
- It emphasizes the use of highly configurable Menus rather than just buttons - you can build hierarchical menus of any depth and varying types.
- It has a very powerful tree configuration tool which supports copy and paste, drag and drop, easy temporary disabling.
- Multiple dock support - a single instance of the program can support multiple docks and tray menus.
- Robust support for virtual file menus - confgure menu items to give you access into specific folders, with many options.
- Drag and drop runtime support - drop files onto buttons to open them with the specific program, or add them to the launch bar.
- Smart tree building - extracts icons and descriptions from files and pictures.
- Special menu building blocks for Start Menu, MyDocuments, etc. More coming soon (control panel, printers).

### 3.2 Walkthrough: Creating Your First Dock

When you start LaunchBar Commander for the first time, it may start out completely empty, with no docks defined.

You can create almost everything by right clicking in the node tree window on the left hand side of the configuration window.

You will start out with a blank new unnamed file. All dock configurations will be stored in this file. You can have multiple docks in one file, and even multiple files open and running at the same time(!).

Ok, let's add your first dock:

- Select the file node and either right click and add a new child node of the Dock type, or choose Add Node -> Child Dock from menu, or the add child node button from toolbar. This will create a new unnamed, empty dock.
- There is no icon yet for the dock, let's pick one. Click the first folder button next to the icon line and choose a fun icon.



- Give the dock a nicer name, like "My Dock"
- We'll leave the other options at their defaults for now.

Now you have a dock, but there's nothing on it yet. Let's start by **adding a button that acts as virtual copy of your Start Menu**:

- Select the new Dock node, and add a Child Folder node.
- Give it a nice name like "My Start Menu"
- Choose a nice icon for it as we did before.
- Go to the "Root Folder to Display" field and select "AllStartMenu" (make sure not to choose "AllStartupMenu", that's different).
- Click the "Save Changes" button to save your changes.

Now hit the save button to save your new configuration file. You'll be asked to name the file since this is a new file.

Ok now close the configuration display by hitting the close button at the top right. Only then will the launchbar be created.

Your first dock will start out as a free floating box probably of the wrong size. Don't panic!

Just resize the window to best display your buttons, and then drag the window titlebar to one side of your monitor to dock it. Right-click on the dock to un-dock it. Or chose to minimize it to tray. You can reconfigure it at any time by choosing "Preferences" from a right click in the dock (or clicking in empty area).

Remember that you can go back at any time to the configuration display to reorganize your entries, and change how the toolbar is displayed. You may use multiple columns of tiny icons, or use large icons with full text labels.

### 3.3 Resizing Docking Bars

#### Resizing the Docking Bars:

To resize a docking/launch bar, click on it and use the keyboard Shift+Arrow keys.

## 4 Configuring Nodes

### 4.1 General Options

Global Options of the program are available at the root node.

Here you can choose:

- Start with windows - starts every time your computer starts.
- Keep LaunchBars "OnTop" - other windows will show underneath.
- Appearance Skin - here you can customize the look.
- Custom File Explorer - set this if you want to browse folders using a custom file explorer replacement.
- Custom Internet Browser - set this if you want to use a non-default browser to open internet urls and shortcuts.

### 4.2 Dock Nodes

A file contains one or more docks, which can be easily disabled to hide them from view.

A dock node has a caption, which is only visible when the dock is free floating in a window.

A dock has an icon which is shown when the dock is minimized to the system tray.

Other Options:

- Icon Display - none, small, large - icons on the bar itself.
- Menu Icons - none, small, large - icons inside menus of the dock bar.
- Border - visual border on dock.
- Docking Preferences - Normal, Autohide, Autoslide - don't work perfectly yet.
- Background Display Options - color, transparent, skin.
- Sounds - useful for some audio feedback.
- Caption font and wrap - specify a wrap position for long captions.
- Alpha transparency - make the whole dock transparent.

### 4.3 Menu Nodes

A Menu node is a container for other menus and commands and folders, etc.

Menu Type:

- Standard - show as a menu
- Contents as root-level items - a container that shows its contents at its level.
- Treat as tool button - push once to launch current item selected, or drop down list to select a new tool.
- Treat as batch button - runs all children nodes when clicked - not implemented yet.
- Treat as tab page - not implemented yet.

### 4.4 Application/Command Nodes

Command Nodes configure what command will be run, or file will be open when triggered.

- Command: name of program/file to launch - use browse button to open dialog to specify.
- Working Directory: where to set path when launching.
- Startup Mode: Normal, Minimized, etc.

- Switch to this application if already running: will switch instead of launching a new instance.
- Arguments - to be passed to program; use %file% to use file dropped on the launchbar icon.

The Dropped Files and Scripts tabs are not yet functional.

## 4.5 Commandline Output / File Contents Menu Nodes

You can now have LBC run a commandline console tool and grab the output of it to make menus on the fly.

Note: If you specify a .txt or .dat filename instead of an executable, it will be read directly and used.

Syntax:

- // comments are preceded with the standard double forward slash
- Files are simply listed each on their own line, and added in order - you can specify documents or executables
- Directories are again listed each on their own line -- they will turn into fully expandable menus
- To insert a separator, specify the minus sign - on its own line
- To specify a non-clickable text header separator, specify a caption on a line starting with a minus sign -
- To make a submenu structure, start with the submenu label followed by a { at the end of the line, then specify the contents, each on their own line, and then end with a } on its own line. You can nest these to arbitrary depth.
- You can also specify a custom icon for any file, folder, submenu, which will override any default for that item, by specifying at the end of the line /icon=full\_path\_to\_icon
- You can specify a custom caption different from the filename/foldername by specifying at the start of the line Caption String |
- You can refer to the directory where the commandline tool resides with %comdir%
- You can precede a filepath with a < character to indicate that instead of a normal program to launch when a button is clicked, LBC should create a submenu whose contents are determined by the output of the commandline tool.
- Instead of a file/exe to open, you can specify the following special commands:
  - paste texttopaste** -- uses ctrl+V clipboard to send this text to the last active window
  - sendkeys keystosend** -- uses sendkeys mode to send text to last active window
  - sendkeysascii keystosend** -- uses senskeys (ascii) mode to send text to last active window

Example:

```
// We start with a directory submenu
E:\MyDocs\
// then a separator
-
// then a submenu enclosing more entries, and with a custom icon
MyFiles /icon=%comdir%\smileyavatar.ico {
  // and now some file entries (the indenting is optional)
  C:\Windows\System32\notepad.exe
  E:\MyDocs\Academic\Text\thesis.txt
}
-Final Stuff
// end with another text file, but with custom caption
```

```
My ToDo List|E:\MyDocs\Academic\Text\MyToDoList.txt
Paste Signature|paste Sincerely,\nmouser
```

## 4.6 Folder Nodes

Folder nodes let you specify menus built from the contents of a folder(s) on your hard disk, or the contents of a special virtual folder like the Start Menu.

Folder Node Options:

- Root recursion depth: when set to larger than 0, all file contents in the specified depth of subdirectories will be shown in root menu. Be careful, values greater than 1 or 2 can lead to huge file lists in directories with lots of subfolders.
  - Subfolders as Submenus: show found subdirectories as menu items. If false, no submenus will be shown, only files.
  - Show hints: hints on menu items.
  - Show hidden files: show hidden files in display.
  - Only show files newer than # hours (set a cutoff).
  - Folder pattern only applies to root: the folder patterns will only exclude root level submenus.
  - Large icons: choose size of icons in menu.
- Root Folder to Display: Set the folder whose contents you want to display  
You can separate multiple folders with ;  
You can choose from special folders with the drop down box, including the contents of your Start Menu, which can be very useful.
- Accept File Patterns: If specified, only files match this pattern (for example \*.pdf) will be shown. Separate multiple patterns with ;
  - Reject File Patterns: If specified, all files matching any ; separated pattern will be rejected
  - Accept Subdir Patterns: If specified, only subdirectories that match this pattern (for example \*Best\*) will be shown. Separate multiple patterns with ;
  - Reject Subdir Patterns: If specified, all subfolders matching any ; separated pattern will be rejected (for example \*JUNK\*).

Tip: You can create a virtual folder and set a recurse value and disable subfolder listing, set a new hour limit, and specify a pattern like \*.pdf, to have a nice menu of all files in some deep directory that match a given pattern.

### 4.6.1 Virtual Folders

You can use the following virtual folder names in the folder path:

```
%Desktop%
%DesktopAll%
%Fonts%
%MyDocuments%
%AllDocuments%
%ProgramFiles%
%AllPrograms%
%StartMenu%
%AllStartMenu%
%StartupMenu%
%AllStartupMenu%
%Recent%
```

---

%Favorites%  
%Templates%  
%CommonTemplates%  
%AppData%  
%CommonAppData%  
%Network%  
%AdminTools%  
%CommonAdminTools%  
%NetworkConnections%  
%ControlPanel%  
%InternetHistory%  
%Printers%  
%PrinterNeighborhood%  
%MyMusic%  
%MyVideo%  
%MyPictures%  
**%APPDRIVE%** -- drive where LBC has been run from (call like %APPDRIVE%\subpath)  
**%APPDIR%** -- directory where LBC has been run from

## 5 Tips and Tricks

### 5.1 Runtime Tips and Tricks

- You can drag shortcuts onto a docking bar and the program will smartly prompt you how to handle them.
- You can drag documents onto programs on the docking bar to launch them.
- You can drag folders onto the docking bar to add a folder menu.
- You can CTRL+Right Click items on docking bars OR on any popup menu to open the containing folder of the item without closing menu.
- Hit Ctrl+Alt+Shift+L to bring the options dialog up even if launchbars are somehow hidden offscreen -- useful for recovering from weird monitor changes that hide launchbars.

### 5.2 Designtime Tips and Tricks

- You can drag new commands and documents into the tree while designing it.
- You can use right click to insert a command easily from a running process.
- You can backup your current configuration files from the Maintenance menu (recommended!)
- You can create a virtual folder and set a recurse value and disable subfolder listing, set a new hour limit, and specify a pattern like \*.pdf, to have a nice menu of all files in some deep directory that match a given pattern.
- When dragging and dropping nodes, the default operation is a move operation when within the same file, or a copy operation between files. You can override by holding CTRL to force a copy operation or SHIFT to force a MOVE operation.
- If you would like a folder node to show the contents of MULTIPLE directories, you can either add their parent folder, OR you can now **separate multiple paths with the < character**.

### 5.3 Portability and Environmental Variables

You can use the following environmental variables in paths to make your configuration file more portable:

- %WinDir% - for example C:\Windows
- %SystemDirectory% - for example C:\Windows\System32
- %MyDocuments% - for example D:\My Documents
- %ProgramFiles% - for example C:\Program Files
- %StartMenu%
- %Favorites%
- %APPDRIVE% -- drive where LBC has been run from (call like %APPDRIVE%\subpath)
- %APPDIR% -- directory where LBC has been run from (call like %APPDIR%\subpath)

Note that when adding folder nodes you can select these special folders to list from the drop down menu. The strings above are for use in adding Command nodes.

For example you might add a notepad command to: %SystemDirectory%\notepad.exe

---

Using LaunchBar Commander on removable usb drives:

LaunchBar Commander is designed to be usable on removable drives, like usb pen drives, etc.

If it can't find the file/command/folder specified at the exact location configured, it will look for it on the same drive as the program is running from. In this way you don't have to do anything special, just ensure that the programs are in the same locations on the drive when you move the configuration file.

Alternatively, you can use %APPDIR% to refer to the base directory of the LaunchBarCommander.exe itself. So you can refer to files to be launched relative to the LaunchBarCommander.exe program itself.

## 5.4 Plugins and Tools

Starting with version 1.107.01, LBC now has a way that users can share packs of 3d party commandline tools along with some pre-configured submenus, and use these as on-demand plugins.

Essentially, an .lbctool file tells LBC how to create new nodes or submenus -- typically ones that will invoke a 3d party tool that accompanies this file.

To share tool packs, simply zip up the commandline tool along with an accompanying .lbctool file and optionally a .txt menu definition file for other users. They unpack the zip into their Tools subdirectory of LaunchBar Commander, and they can now add the tool nodes from the tree just like they add other node types.

An .lbctool file is a simple text file that tells LBC how to describe and configure a new node that the user will be able to create:

```
// Tool configuration for Launchbar Commander
// Format:
// title =
// app = precede with a < character if you want to run the app and grab contents
for menu
// params =
// iconfile =
// Notes:
// if title = - then it is a separator (no other values needed)
// params and iconfile are optional
// if iconfile is blank, the exe file icon will be used
//
// The following macros are available for exe and params
// %THISDIR% - the directory this file is in
// %APPDIR% - the directory where the program (Screenshot Captor) is run from
// %APPDRIVE% - the drive (e.g. c:) where the program (Screenshot Captor) is run
from

title = Most Recently Used Files
app = <%THISDIR%\MruCmd.exe
params = mrum
iconfile = %THISDIR%\MruCmd.ico
hint = Show various recently used documents
```

In this example, the MruCmd.exe commandline tool would be placed in the same subdirectory as this file, along with the MruCmd.ico icon file, for example:

```
C:\Program Files\LaunchBarCommander\Tools\Mru\
```

### IMPORTANT:

The < character preceding the application name tells LBC that instead of a normal program to launch when a button is clicked, it should create a submenu whose contents are determined by the output of the commandline tool.

You can also specify a .txt filename after the < instead of an executable filename, which tells LBC to

create a submenu from the contents of a text file. See [here](#) for more info.

## 5.5 Commandline Arguments

-triggernode INTERNALIDNUMBER

Will show the menu referenced by the internal ID number (see at top of panel in tree dialog when you click on a node), as a popup menu at cursor.

-config

Will open up the configuration dialog on start; useful if you need to fix something, or reset dock size/position data.

-exit

Will exit the program if running or do nothing if not running

The following commandline options are only available if you get a special license key for distributing your software to others:

-readonly

Will not allow user to enter configuration screen to add/change nodes (but will save updated dock positions, remember window positions and sizes, etc.)

-nosave

Same as -readonly but will save NO changes at all and not try to write configuration files (will not remember window positions and sizes, etc.)

-nodock

Will not allow launch bars to be docked.

-nowindow

Will not allow launch bars to be free-standing windows.

-notray

Will not allow launch bars to be minimized to the system tray.

-nodc

Will not show donationcoder links (forum, help, website) in right-click or tray menus.

-nooptions

Do not show right-click options item in tray menu (this will also trigger if -readonly is passed).

## 5.6 Sendkeys Documentation

*When you create a node that sends text to the last active window (or triggers global hotkeys) you can see the SendKeys method.*

The new method simulates each key press one at a time, and most importantly, can send tabs, function keys, ctrl keys, etc.

This will let you create clips that actually fill out multiple fields by putting a TAB after each field.



---

And a really cool example of this is that you can create a Formatting Preset for example, that takes a string like 1111-2222-3333 and converts it to:

```
{sendkeys}1111{TAB}2222{TAB}3333
```

If you call this formatting preset something like "Paste Serial Into Fields" you can see why it would be useful -- you can use it to fill in a multi-field serial number dialog in an installation program using only a couple of key presses:

- \* Select the string with dashes in it
- \* Move to the first serial number field in the installer
- \* Hit Ctrl+Alt+Q to bring up the quick paste menu (or whatever hotkey you configured), and choose the "Paste Serial Into Fields" preset from the menu.
- \* All done.

---

Special strings that you can use in a {sendkeys} clip, from the TPushKeys help file:

Function key definitions are enclosed within braces, keys from F1 to F24 are represented by:

```
{F1}...{F24}
```

State Modifiers

```
Shift Key          +
Ctrl Key           ^
Left Alt Key       %
Right Alt Key (Alt Gr) !
```

Prefix any key definition with the appropriate modifier to affect the key press immediately following it e.g. +ab will result in the key strokes Ab being directed to the application.

To extend the modifier to affect a group of characters enclose them in parentheses e.g. !(ab) will result in AB being simulated. Parentheses may be nested so that !(+(ao)) will give ÁÓ.

Note: State Modifiers need not be used with standard keys as they can be entered directly. See example

IMPORTANT: When you want to trigger normal letter keys in combination with Ctrl Alt Shift, you **\*MUST\*** use lowercase versions of the letters, or a SHIFT key will be simulated.

To simulate the press and release of a modifier key then the key symbol must be the only character in the Keys string. See example

Numeric Keypad

Numeric keypad keys are enclosed within braces.

```

0 to 9          {NUMPAD0}...{NUMPAD9}
-              {NUMPAD-} or {NUMPADSUBTRACT}
+              {NUMPAD+} or {NUMPADADD}
/              {NUMPAD/} or {NUMPADDIVIDE}

*              {NUMPAD*} or {NUMPADMULTIPLY}
.              {NUMPAD.} or {NUMPADDECIMAL}

```

#### Navigation Keys

Navigation keys are enclosed within braces.

```

Enter          {ENTER} or {RETURN} or ~
Newline       {NL} or {NEWLINE}
Cursor Down   {DOWN}
Cursor Up     {UP}
Cursor Left   {LEFT}
Cursor Right  {RIGHT}
Page Up       {PGUP} or {PAGEUP} or {PRIOR}
Page Down     {PGDN} or {PAGEDOWN} or {NEXT}
Delete        {DEL} or {DELETE}
Backspace     {BS} or {BKSP} or {BACKSPACE}
Home          {HOME}

End           {END}
Tab           {TAB}
Formfeed     {FF}

```

#### Delay

A delay may be introduced into the key stream by using:

```
{SLEEP n}
```

where *n* is a numeric value representing a number of milli-seconds to wait. Note: the KeyDelay pause is ignored following a {SLEEP} key. See example

#### Direct Entry

A key code may be entered directly in the form:

```
{\nnnn}
```

where *nnnn* represents the Alt-Numeric keypad keys used to generate the character.

Note: Normally this option is not needed as characters may be entered directly into the Keys string. See example

#### Other Keys

This section includes the method to send reserved keys: !,%,^,+,. See example

```

Bell          {BELL}
Break         {BREAK}
Caps lock     {CAPS} or {CAPSLOCK}

```

---

Escape	{ESC} or {ESCAPE}
Help	{HELP}
Insert	{INS} or {INSERT}
Number lock	{NUMLOCK}
Printscreen	{PRINTSCREEN} or {PRTSC}
Scroll lock	{SCROLLLOCK} or {SCRLK}
Pause	{PAUSE}
Cancel	{CANCEL}
Left Windows key	{LEFTWIN} or {START}
Right Windows key	{RIGHTWIN}
Applications key	{APPS} or {CONTEXT}
Left brace	{{}
~	{~}
+	{+}
%	{%}
^	{^}
!	{!}

---

This new functionality is provided by the TPushKeys component by Alan Warriner which encapsulates, and extends, Christopher Latta's PushKeys code ([alan.warriner@bigfoot.com](mailto:alan.warriner@bigfoot.com), [www.alan-warriner.co.uk](http://www.alan-warriner.co.uk))

## 6 Extra Information

### 6.1 Screenshots



### 6.2 Version History and To Do List

#### VERSION HISTORY

##### v1.153.01 - Mar 24, 2017

- [MajorFeature] First High-dpi compatible version beta.
- [BugFix] Too many backup files were sometimes being created.
- [MajorFeature] You can now set custom icon sizes for large and small buttons (see main options tab 3).
- [Improvement] Improved message when you try to launch a second instance.
- [Feature] Added an "auto-size" bar to right-click bar pop-up menu.
- [BugFix] Fixed error that could occur on rare occasions that the configuration tree attempted to display twice.

##### v1.151.01 - Mar 3, 2017

- [Feature] New option to show mouseover hints for submenu items of a menu.

- [BugFix] Top level folder nodes were not showing mouseover hints even when option was enabled for the dock.

#### **v1.150.01 - Jan 20, 2017**

- [Feature] New option for command nodes to launch as admin.

#### **v1.149.01 - Dec 22, 2016**

- [BugFix] LBC was sometimes not autoadjusting its dock position when a multi-monitor secondary screen resolution changed, leaving the dock off screen.
- [BugFix] When dropping shortcuts to create new command nodes, LBC would sometimes set the "run hidden" checkbox resulting in a launch button that seemed to have no effect.
- [MinorImprovement] Icons added to pop-up right-click menu in config tree.
- [MinorFeature] New launch item added to pop-up right-click menu in config tree.
- [BugFix] Right-click shell context menus would not work on command nodes that uses environment paths.
- [BugFix] Fixed rare crash that could occur when installing new version and existing version was already running.
- [BugFix] Right-click context menus were sometimes disappearing - thanks abc163!

#### **v1.147.01 - Sep 16, 2016**

- [BugFix] LBC was sometimes staying topmost even when a full screen app was running, contrary to options set.

#### **v1.146.03 - Dec 10, 2015**

- [MajorFeature] New global search and replace function in Tools menu.
- [MinorFeature] Added -nooptions commandline arg, and stopped hiding right-click tray menu unless this option is passed.
- [BugFix] Fixed some problems with the -config and -exit commandline arguments and fixed a bug that could cause an exception on exit.

#### **v1.145.01 - Apr 22, 2015**

- [BugFix] On bootup, a docked launchbar was occasionally docked off screen and could only be restored by Ctrl+Alt+Shift+L emergency hotkey.

#### **v1.144.01 - Dec 25, 2014**

- [Feature] Added toolbar button in tree configuration dialog to quickly rebuild toolbars and preview changes.
- [Feature] Added option to folder contents nodes to sort results by date (and list date).
- [MinorFeature] When Ctrl+V paste is not accepted by a node, you now get a better error.
- [MinorFeature] Some error messages could appear on wrong monitor of multimonitor setups.
- [MinorFeature] Added shortcut to Control Panel itself in control panel shortcut list.
- [MinorFeature] Maintenance check for missing images and commands now reports each node's internal id.
- [MinorFeature] Dropping a shortcut file and telling LBC to copy shortcut properties will now use shortcut name as node caption.
- [MinorFeature] Menu item captions can now use environmental % vars.
- [BugFix] SwitchTo running process was not detecting running processes if the command was specified using relative path or environmental vars.
- [BugFix] LBC was failing to grab icons from non-exe files.
- [BugFix] Fixed hanging crash that could occur if an icon could not be extracted from a file (for example a dropped .scr file).
- [BugFix] Fixed incorrect missing-icon image used when icon could not be extracted from a file.
- [BugFix] Html files with spaces in their names would not launch.

**v1.143.01 - May 21, 2014**

- [Change] In an effort to avoid having significant changes to configuration tree lost on a crash -- the program now prompts you to save changes whenever you close the configuration tree.
- [BugFix] On opening configuration tree, the tree was sometimes scrolled so that the Options node was easy to overlook.

**v1.142.02 - May 15, 2014**

- [Improvement] The preferences (configuration tree) dialog was always scrolling the top Options node out of view, making it hard to find. This top node is now scrolled into view where it is more obvious.
- [BugFix] Automatic fixing up of form position/size on resolution change was sometimes not being engaged.
- [Improvement] Clarified onscreen instructions for adding a node that opens a folder.
- [MinorFeature] The exit menu item on launchbars can be disabled.
- [Feature] You can now use Ctrl+Shift plus Up,Down,Left,Right when in the configuration tree to move nodes around the hierarchy easily.
- [Feature] Supports use of environmental variables and %APPDIR% like replacements in command launch arguments (needs testing!).
- [Feature] An error is now reported if user tries to launch a node pointing to a non-existent file (needs testing).
- [Feature] Added new maintenance menu item to check entire tree for any filepaths that may no longer be valid (user has option for trying to auto fix them).
- [Bugfix] LBC was not properly identifying full screen applications, causing it not to unhide when it should if current window was maximized (but not full screen); if you have turned off the option to Keep LaunchBars "On Top" and you use AutoHiding docks, you should try re-enabling this option. Should make it possible to use full screen games without LBC waking up.
- [MinorFeature] You can now set custom size of separators.
- [MinorFeature] You can now set custom margins for docking bars.
- [MinorFeature] You can now set minimum width/height for items (for entire dock or override for single items).
- [MinorFeature] If dock is set to show item hints, those hints will now also be shown on hover when dock is minimized to tray.
- [BugFix] Program was reporting file not found when trying to launch commands that were non traditional files.

**v1.140.01 - Feb 13, 2014**

- [Bugfix] LBC was not properly identifying full screen applications, causing it not to unhide when it should if current window was maximized (but not full screen); if you have turned off the option to Keep LaunchBars "On Top" and you use AutoHiding docks, you should try re-enabling this option. Should make it possible to use full screen games without LBC waking up.

**v1.139.02 - Dec 7, 2013**

- [BugFix] Dropping a file into the middle of a parent's children could have resulted in tree showing incorrect items until preferences closed and reopened.
- [Improvement] Minor improvements to the preferences/tree configuration UI; split main program options into multiple tabs.
- [Improvement] Improved layout of command node options and instructions for handling dropped file arguments.
- [MinorFeature] You can now explicitly rebuild launchbars from the preferences tree dialog from View menu, without closing preferences; this acts as a kind of Apply/preview function.
- [Change] Enabled the "add padding" option to launchbars by default; this just adds a little padding at top and bottom (left and right) of launchbars. This is especially useful for making non-full height docking bars.

- [Improvement] When specifying a menu to be built from file contents, replacements will be made on the filename path specified, allowing you to use [virtual folder replacement variables](#) (e.g. %APPDIR% and %APPDRIVE%).
- [Improvement] It was confusing to new users that the root Options node was where you had to go to change global system options, so I added a View -> Program Options item to menu,
- [Improvement] LaunchBars won't unhide if a full screen app is running (think Netflix, screensaver, etc.)
- [Improvement] Some checks for fullscreen app running were failing.
- [Improvement] On portable use, it was possible for mcf docking bar files to not be found if the directory name had changed.
- [BugFix] Folder node hints were wrong.
- [BugFix] Change icon button was sometimes unreadable.
- [Improvement] Full-screen state detection improved (on win7 a normal maximized window might make LBC think a full screen app was running).

#### **v1.137.01 - Sep 23, 2013**

- [Feature] LBC was sometimes not properly docking hiding/sliding docks -- they would reserve desktop space even though they shouldn't.
- [Feature] Option to check for updates at startup.
- [Feature] When using keyboard keys to resize dock, you can now use ctrl and alt + arrows to move and resize docks (works well when you have the don't stretch option checked for a dock). Fixed bugs related to resizing with keyboard.
- [Feature] New [commandline options](#) and license options that make it possible to use LBC as a launcher for a read-only file that you distribute to others.
- [Improvement] Uses captions as hints when icons are set to not display captions and hints are enabled.
- [Improvement] When specifying custom x,y popup location of dock menus, you can use negative values to offset from right and bottom of screen.
- [Improvement] Installer now offers to run the program after installation.
- [Improvement] Program no longer advises you to backup your file until you have a non-trivial number of nodes in it.
- [Improvement] You can now drag+resize even borderless docks (usually!).
- [Improvement] When hotkey triggering a pop-up menu, the previously active window is now restored to focus after the popup menu closes -- this makes LBC well suited in scenarios where you don't want to lose focus of current application, like for HTPC software.

#### **v1.135.01 - July 8, 2013**

- [Feature] LBC will now try to load launchbar files (.mcf) relative to the project file (.mcp), and try to load the project file relative to the application exe. This is useful when using LBC portably or when using LBC on a multi-account system.

#### **v1.133.01 - November 24, 2012**

- [Feature] You can now configure docks to not be full height/width when docked; use the right-click menu to center the bars and drag to resize.
- [BugFix] Toolbars docked to left or right hand side of screen would have the right-hand side border line disappear when the width of the toolbar unless a generous right-hand margin was left unused.

#### **v1.132.01 - April 15, 2012**

- [Feature] You can now drop urls and url shortcuts onto items (like browsers) that accept them, in the same way you can drop files onto items that accept files.
- [Feature] You can now drop urls and url shortcuts onto an empty space to create new items to launch those urls (just like when dropping files)
- [MajorFeature] New node type: Paste Text/SendKey simulator -- you can paste preset text into last active window, or simulate the pressing of global hotkeys (function keys, contrl/alt/shift etc). Supports

both Ctrl+V use for fast pasting large block of text, or one-by-one character simulation which can support virtual keys and can work in any target window (even a dos box).

- [MajorFeature] You can now use the virtual commands "paste" and "sendkeys" in menus built from text files, plugins, or commandline output. This makes it fairly easy to use LBC to show a large menu (stored in a plain text file) of things to past into the active window.
- [Feature] New node type for MenuContents from File -- which allows you to specify a text file whose contents will be used to build menu dynamically. This feature was actually already possible using the MenuContents from Commandline node by specifying a .txt file, and could be used by .lbctool files to support plugin-like use of text file menus, however the new node type also allows you to manually specify some menu content text directly in the node configuration itself. I don't recommend using this for large menus but for quickie stuff and testing it can be useful.
- [Feature] Portable zip now uses ConfigDir\_Default.ini which is overridden by the presence of a ConfigDir.ini file, so users unpacking the contents won't overwrite any custom ConfigDir.ini they may have.

#### **v1.131.01 - February 27, 2012**

- [Feature] You can now use [commandline invocation](#) to show a menu under the cursor for a running LBC menu node (-triggermode NODEINTERNALID#)
- [BugFix] Restoring a hiding/sliding dock from the tray could cause it to reserve desk space when it shouldn't.
- [BugFix] You should no longer see the floating dock temporarily while it is starting up before restoring its last position docked to the side of the screen.
- [BugFix] When triggering a pop up menu with a hotkey that contained Control key, the folder of the menu was also opened simultaneously; pop up menus also now start with keyboard focus.
- [BugFix] Captions were showing temporarily on submenus configured as toolbar buttons, when switching between them.
- [BugFix] Docks (typically multiple docks) were forgetting whether they were docked or floating.
- [AdvancedFeature] You can now configure a node with submenus to be a "Treat as tool button" menu, which will make one submenu the active button at any given time, with bottom choices to switch.
- [MinorFeature] Added additional configuration tab for docks; added button to reset dock/window size/ position from configuration.
- [BugFix] Automatically checks for if floating docks are off screen or too large, and repositions.
- [MinorFeature] Position of configuration tree dialog is now remembered.
- [Feature] Now using a dual package (installer and portable zip), with portable zip preconfigured for portable use; installer and executable are now signed.
- [BugFix] On large font displays the docks were taking up more space than they should.
- [BugFix] Tab Page menus with captions were not updating captions properly when switching tab page menus.

#### **v1.129.01 - November 21, 2011**

- [BugFix] When using multiple docks, all but first dock would fail to remember the monitor it was docked on.
- [BugFix] When minimizing docks to the system tray, docks could forget which monitor they were docked to, or whether they were docked or floating.
- [BugFix] Floating docks could sometimes change size or monitor when docked and undocked.
- [MinorFeature] When clicking on a dock that is minimized to the tray (left or right click), a second click will toggle the menu off.
- [MinorFeature] You can now set custom screen popup location for hotkey triggered menus (overriding default of popping up under mouse cursor)
- [MinorImprovement] Improved help for resizing docks.
- [Feature] If you try to launch multiple instances of LBC you will now get a message saying so, the second instance will exit, and the first instance options will be shown.
- [Feature] If you now use the hotkey to toggle visibility of hidden/sliding docks, they will STAY visible



until you toggle them back into their hide/slide mode with hotkey again.

- [Feature] You can now customize the hide and unhide delays for hidden/sliding docks.
- [BugFix] The hittests for revealing Hidden/Sliding docks was ignored pixels near extreme sides of screen, which could result in dock not appearing when mouse was over it.
- [MinorFeature] New program icon by HamRadio.
- [MinorImprovement] Improved installer and default dock (especially for win7)
- [BugFix] Fixed crash that could occur when closing a file from three that was already showing a launchbar on screen, or deleting such a dock node.

#### **v1.127.01 - June 4, 2011**

- [Feature] For command nodes you can now use the checkbox to say that if the process is found already running, LBC should switch to it rather than launching a new process.
- [BugFix] Backup option on main root node was not always being saved.
- [BugFix] Removed Nirsoft Nircmd auto installation, because antivirus companies were giving stupid false positives.
- [BugFix] If you now set a custom menu font and choose color BLACK for text, it will properly invert the color when highlighting it.

#### **v1.126.01 - May 6, 2011**

- [BugFix] The # character in urls was being converted to %23 which was causing them to sometimes not launch properly

#### **v1.125.01 - April 17, 2011**

- [BugFix] Changed default arguments of dropped node from %file% to "%file%"

#### **v1.124.01 - March 20, 2011**

- [MinorFeature] Right-click context menu for tree node now selects it first (could be source of reported deletion bug)
- [MinorFeature] New confirmation when deleting nodes (reports caption of node to be deleted and summary of children count); confirms when trying to delete parent node with many children.
- [MinorFeature] Custom hotkey option for bringing up configuration tree.

#### **v1.123.01 - February 20, 2011**

- [BugFix] Attempt to improve vertical docking bar blank area display.
- [BugFix] LBC was overly aggressive about reacting to screen resolution changes, especially on multimonitor setups; should now only readjust when a monitor a dock is on changes resolution. (uncheck main option to disable this behavior).

#### **v1.121.01 - February 16, 2011**

- [BugFix] Right-clicking in menus to bring up context menu could sometimes launch the item.
- [BugFix] The borders of left+right docked docks could become hidden.
- [BugFix] Rebuilding of docks sometimes forgot recent size changes.
- [MinorImprovement] Left+right docked bars with normal and menu buttons of different widths would left-align icons; they are now centered if the "all same size" option is set.

#### **v1.120.01 - February 15, 2011**

- [MinorFeature] Tree Configuration dialog can now be resized to short height to fit on netbook screens.
- [MinorFeature] The default launchbar file can now be saved and no longer gives warning about "should be resaved as a different name"
- [Feature] You can now right-click items in popup and tray menu bars to get their context menus or jump to them in explorer/config.
- [Feature] You can now CTRL+Right Click items on docking bars OR on any popup menu to open the containing folder of the item.

- [MinorImprovement] Better hints for dragging and dropping nodes; better text for sibling/child node creation.

**v1.117.01 - January 17, 2011**

- [MinorFeature] New options to reduce/control backups
- [MinorFeature] Options to customize custom file and web browsers.

**v1.116.01 - September 26, 2010**

- [MinorFeature] New option to disable the autofix on resolution change; and attempt to not perform this when full screen application is taking over;

**v1.115.01 - September 2, 2010**

- [MinorFeature] Unhiding docks with hotkey now causes them to show immediately, even if "Delay on Unhide" option is set.
- [MinorFeature] New general option to disable the default behavior of turning off on-top behavior when a screensaver or other full-screen application is running.

**v1.114.01 - August 25, 2010**

- [BugFix] Older files with a bad icon image somewhere in the dock could cause improper matching of tree items and icons, resulting in wrong icons being shown for tree nodes.

**v1.113.01 - August 5, 2010**

- [Feature] LBC now detects when the monitor changes resolution and auto-adjusts itself to the new dimensions (fixes bug where a resolution change could cause LBC to be offscreen and unactivateable)
- [BugFix] Options for specifying multiple folder inclusion and exclusion patterns said to use ; but this did not work. You should now use | character to separate multiple patterns.
- [Feature] Added item to right-click menu to open the containing folder of an item on the dock or in a folder menu.
- [BugFix] Trying to fix rare error message about showing a modal window when working with options.

**v1.112.01 - May 4, 2010**

- [Feature] You can now drag+drop files and folders onto tree configuration nodes that aren't containers, and items will be added below them, like siblings.
- [BugFix] When dragging and dropping files+folders onto tree configuration, they were previously lowercased.

**v1.111.01 - April 15, 2010**

- [Feature] You can now choose to hide all (or only .lnk) file extensions in folder nodes.
- [BugFix] Using an item with an icon that can't be read could mess up item images temporarily -- fixed.
- [Feature] Creating new dock node starts with a default icon.
- [Feature] You can now add custom spacers in the Separator item nodes.

**v1.110.01 - December 25, 2009**

- [Feature] Some people were getting error about missing drives when LBC tried to resolve paths for items that no longer had valid paths; such resolution is now not enabled by default, but can be enabled in the main Options page.

**v1.109.01 - November 29, 2009**

- [BugFix] Removed useless "Preferences" menu from preferences dialog.
- [Feature] If you ctrl+click on tab page tool buttons they will cycle through child "tabs".

**v1.108.02 - June 30, 2009**

- [BugFix] The %Recent% folder list was not being filtered properly by file patterns, because all such

links have .lnk at the end of them. New code removes the extra .lnk when matching against file patterns.

- [BugFix] Folder nodes whose paths had an extra \ character at end were showing contents but failing to show icons.

#### **v1.108.01 - June 28, 2009**

- [Bug Fix] It seems that recently the icon loading of document files stopped working (executable file icons were detected properly but not document file icons); this is now fixed.

#### **v1.107.01 - June 26, 2009**

- [Major Feature] LBC now scans the Tools subdirectory for [.lbctool files](#) which define pre-configured menu items that can be added easily to launch bars using the tree configuration gui. This works with the new [commandline tool output](#) system to provide a kind of limited on-demand Plugin functionality.
- [Minor Features] Better [commandline output processing](#) into submenus.

#### **v1.106.01 - June 22, 2009**

- [Feature] Better error detection during file save and load.
- [Feature] SaveAs now defaults to current filename.
- [Feature] Unhiding trigger on mouseover now ignores top right and bottom left corners of screen to avoid maximized window buttons and start menu.

#### **v1.105.02 - June 20, 2009**

- [Feature] V1.05.01 of LBC had an invalid pointer bug that could crash when loading launchbars.

#### **v1.105.01 - June 18, 2009**

- [Feature] LBC now makes automatic backups more often -- one each month that you make changes to the file, and when updating LBC version.
- [Feature] LBC now warns if you are saving a LBC docking bar file with the initial default filename.

#### **v1.104.01 - June 17, 2009**

- [BugFix] Adding entries from running processes was not grabbing full file path -- hopefully i haven't broken anything in fixing this.
- [MajorFeature] You can now specify node menus that are built from [commandline tool output](#) (or file contents); this can be used to create plugin-like nodes.
- [Feature] Added ability to override icon+caption settings for submenu nodes and tab nodes and their children -- this lets you mix and match large and small icons on a dock bar.
- [BugFix] Captions weren't changing properly on tab nodes when switching.
- [Feature] You can now Ctrl+Click on dynamic file/folder menu items to open their \*containing\* folder.
- [BugFix] The [%APPDRIVE% and %APPDIR%](#) replacements were not being done properly.
- [BugFix] Trying to fix the occasional error when using the "Configure this item" menu.

#### **v1.102.01 - June 13, 2009**

- [BugFix] On Windows Vista and Windows 7, LBC was by default saving the initial launchbar in, and defaulting to saving in, the Program Files directory. This is now changed to the user's documents directory. If you are using VISTA or Windows7 and have a previous version installed, please save your custom launchbars in a directory of your own choosing and remember to back it up with your other data files.
- [MajorFeature] You can now create "tab" submenu nodes, which are meant to hold a collection of child submenus, which can be switched between. By placing such a tab submenu on your dock you can easily click to switch the configuration of your docking bar icons on the fly to different sets of buttons to suit your needs.
- [BugFix] Mouseover hints should work now if you enable them on dock options.

**v1.100.01 - June 12, 2009**

- [BugFix] Attempt to fix annoying behavior where dock would unslide twice in rapid succession.
- [MinorFeature] On Windows7 (and in no-border mode) there is now a right-click menu item to toggle resizeable border mode to adjust size of docked bar temporarily; this is another way other than shift +cursor keys to resize docking bars.
- [MinorFeature] Added larger icon to program.
- [Feature] Added background image mode to dock display properties.

**v1.99.01 - June 11, 2009**

- [BugFix] On Windows 7 and Vista the non-docked launchbars were not resizeable.

**v1.98.01 - June 10, 2009**

- [BugFix] On Windows 7 and Vista the docking bars were showing with big ugly grey borders. They now look much better.
- [NewFeature] You can resize the docking bars by clicking on them and using the keyboard Shift +Arrow keys -- this is needed when using Windows Vista and Windows 7 as the docking bar is not draggable/resizable.
- [NewFeature] In Maintenance menu is now a command to fixup changed drive letters and report any links to file paths that cannot be found or fixed.
- [BugFix] Trying to fix flickering caused by yet another try to keep ontop status in place.
- [New Feature] You can set Left or Center text alignment for captions.

**v1.96.01 - June 01, 2009**

- [BugFix] LBC knows to hide when a full screen application (game or screensaver) runs; but it was losing it's ontop status after such an app closed.

**v1.94.01 - May 26, 2009**

- [BugFix] Linked nodes were not launching in Batch mode for Batch menu parents.

**v1.93.01 - May 7, 2009**

- [BugFix] In portable use, the last loaded (.mcf) file was not being automatically loaded when drive letter change occurred. LBC now autocorrects last file name to account for drive letter changes in usb drives, etc. Applications and custom settings already autocorrect for drive letter changes.

**v1.92.01 - March 13, 2009**

- [BugFix] Fixed flicker on hiding/sliding docks

**v1.91.01 - 3/10/09**

- New option for custom bottom text in tray menus (including ability to disable)
- [BugFix] Dropping a new item onto a sliding/hidden docking bar caused it to push other windows out of the way.
- Added -config commandline switch to open up configuration dialog at startup -- useful to correct layout problems that prevent docks from showing.
- Added option to docks to always show tray icon -- useful for testing and hidden/sliding docks.
- You can now trigger the normal LBC popup menu from the right-click menu of items on the dock -- especially useful in transparent background mode when there is no way to click on LBC background to get this menu.
- [BugFix] The NOBORDER option was still leaving a thin border
- [BugFix] The right-click context menu of items could sometimes be hidden behind normal node menu.
- You can now ask LBC to completely hide the docking bar and not even show a sliver when docked (new option in the dock), or show a sliver but now with some transparency to make it less intrusive.
- Added %APPDRIVE% virtual folder to [list of virtual folders](#) accepted.
- [BugFix] The upper right corner of a bar docked to the top or right hand of screen is ignored for

unhiding bars because of likelihood of system icon buttons there -- but cursor there was also causing docks to hide which is no longer the case.

- Added option to delay unhiding of docked bars.
- [Bugfix] Default options for some newly created nodes could show values of last loaded node.
- [Bugfix] Improved theme/transparent/colored options slightly (icons were looking more ragged than they should with colored backgrounds)

#### **v1.87.01 - 2/18/09**

- If you change icon file for a node manually (to a valid new image file), it now recognizes that you have made a change and saves it
- Default ConfigDir.ini is now included with installation for portable use.

#### **v1.86.01 - 1/14/09**

- Fixed bug where hotkey popup menus were showing contents of last virtual folder (control panel, etc.)

#### **v1.85.01 - 12/26/08**

- More attempts at making the ontop behavior work well and consistently
- Attempt to hide under fullscreen games/screensavers.

#### **v1.84.02 - 11/03/08**

- Avoids unhiding when cursor is in top right corner of monitor (where maximized windows have their close button)

#### **v1.83.01 - 11/03/08**

- More attempts to fix the bug where launchbars were losing their ontop status.
- Fixed bug where Folder nodes stopped working.

#### **v1.80.01 - 10/28/08**

- Tried to improve hit detection for sliding/hiding docks and improve ontop behavior

#### **v1.79.01 - 10/28/08**

- Added "Shortcuts" folder with "My Control Panel" subfolder during install -- useful to easily make a folder menu of control panel items on a new dock.
- Folder nodes can now specify directories using the %APPDIR% replacement field and paths of folder nodes can now include system environmental variables combined with subfolders.

#### **v1.76.02 - 10/28/08**

- Fixed hotkey menu popup not responding to keypresses and not disappearing.
- Fixed multiple hotkey popup menus being shown -- now hotkey toggles popup menu.

#### **v1.75.02 - 10/27/08**

- Fixed bug where bar slid out and back multiple times in a row.
- Fixed bug where hotkey pop-up menu was not getting focus or disappearing on change of focus.

#### **v1.74.03 - 10/27/08**

- You can now customize the click sound for menus; click sound played when hidden bar appears
- Tried to fix a bug where toolbar was temporarily shown blank on unhiding
- Included small directory of sounds with installation
- Trying to fix bug where "On Top" setting is being ignored.
- Improved system tray menu.

#### **v1.73.01 - 10/26/08**

- Totally rewritten auto-hiding/sliding docking bar support (make sure you set docks to be OnTop from

main root options node)

- Improved clarity of node right-click menu.
- Improved multimonitor support.

#### **v1.71.02 - 10/25/08**

- Big new feature.. **Multimonitor support!** Now docks can be docked to any side of any monitor. YAY!
- Improved display of different border options for Docks.

#### **v1.70.03 - 10/22/08**

- Hotkey support implemented; you can now configure hotkeys for any item, menu, virtual folder, or dock. Triggering a hotkey normally shows menu under cursor for that branch of tree. For docks you can also configure the hotkey to toggle visibility of dock.
- Tree configuration now does not hide docks -- easier to see skinning options.
- Right-click on items now shows shell context menu when appropriate.
- Click sounds now played during virtual folder navigation.
- Files were not being marked as modified after drag+drop on a launch bar which could result in failure to save the new item.
- Added new readonly file mode which says to ignore any changes without warning.
- Fixed noborder option for transparent launchbars.
- Right-clicking on a node and choosing preferences/configure will now open up configuration tree to that node.
- Added "Save As.." to readonly file change warning choices.
- Added -open "filename" commandline option to specify a filename to load (useful for portable invocation)

#### **v1.61.01 - 8/13/07**

- Added update checking support.

#### **v1.60.06 - 11/19/06**

- When you drag and drop nodes between DIFFERENT files it will now default to a COPY operation not a move (you can override by holding CTRL to force a copy operation or SHIFT to force a MOVE operation).
- Added option in file node for configuring different confirmation levels for saving file changes.
- Several improvements in backup/save procedures designed to minimize the possibility of a crash during save corrupting any data, and make it highly likely that a backup will exist if your launchbar file gets fubar.
- Bugfix: An error message could be generated when clicking on a menu item, due to a mistaken toggle button link id#.
- Improved save procedure on exit.
- Improved save confirmation dialogs.
- Dragging and dropping a shortcut on a bar offered choice of linking to shortcut but ignored this choice and always linked to real file; fixed.
- Fixed bug that could cause crash if you close files/nodes that are showing on a docking bar on screen while you are editing it (docking bars now close while you edit preferences).
- You can now drag and drop file order in tree (i dont know why you would want to do that, but at least it doesnt crash like before)
- You can now drop tree files onto tree to load them.
- Bugfix: images could become temporarily mis-assigned when closing files.
- Added a backup reminder feature on first use.
- Added ability mark files as read-only so they will never be saved accidentally.
- Bugfix: canceling an exit from configuration screen could hang program.
- Changed special folders to have the form %SPECIALNAME% for easier identification.
- Internal file format upgraded (will notify you on loading old files) to speed up special folder access

somewhat and speed up hiding of missing files.

- Bugfix: Folder icons weren't displaying in last version.
- Bugfix: .tmp files were not being deleted on successful save.
- Included HamRadio's awesome Icon Set #0 dll (thanks HamRadio) <---- NICE !!!
- New improved icon image selection mechanism.
- You can now cancel an icon change and it will revert to previous icon.
- You can now manually set the imageid for an item (useful for cloning images from other nodes).
- Added Help item to popup+tray menu.
- Added sample launchbar with categories from HamRadio using his icons (see SampleLaunchbar directory).

#### **v1.56.02 - 10/12/06**

- Bugfix - adding sibling menus could generate temporary erroneous copy of menu underneath.

#### **v1.55.03 - 8/18/06**

- Now .lnk extensions are not shown in virtual folder menus
- Better sorting in virtual folder menus
- New option in virtual folder menus to use dividers between letter groups
- Virtual folder menu item names were being displayed incorrectly when filtering was applied
- Added automatic backup process that backs up config tree files whenever saving new versions
- Icons can now use environmental variables in paths
- Better support for old fashioned folder nodes (click to open in file explorer)
- Loads default Launch Bar on first use
- Fixed broken help file shortcut.
- Added option to hide missing file nodes in a dock
- Fixed new bug where about box was not being displayed

#### **v1.54.02 - 7/25/06**

- Folder browse button didn't trigger a need to save node details.
- Full support for portable use on removable drives (like USB drives), by automatically changing drive letters, or letting you specify program locations using paths relative to application or application drive.
- Fixed bug where skin preferences were not being used at startup.
- Fixed bug where menu caption colors were wrong when default skin was selected.
- Fixed bug when trying to copy entire file tree..

#### **v1.53.01 - 7/23/06**

- Added extraction of icons from dll files.
- Added flexible virtual folder contents menus with pattern filters.
- Wrote preliminary help.
- Fixed bug not saving new items on shutdown.
- Added drag and drop files/folders/icons into configuration fields.
- Added sample LaunchBar file.

#### **v1.51.01 - 3/06/06**

- When launching apps which can take filename arguments but are launched without any, they are now called with NULL commandline args (otherwise some apps were launching with 1 empty commandline arg, which could cause different behavior).
- Taskbar now shows item entry for preferences.
- Added hint to system tray icon when minimized.
- Removed no-border option temporarily since it doesn't work right.
- Files with .htm and .html extensions are now launched with custom browser if configured.
- Improved drawing of icons after a new item is dropped onto the bar

- Added option to switch to apps if they are already running (instead of launching new copy)
- Set default skin theme to Office2003

**v1.50.01 - 2/28/06**

- First limited alpha release to testers.

**TO DO LIST**

- add option to hide all file extensions in file menus
- add function to tag/hide broken shortcuts
- 
- auto hide commands not found
- 
- Add folder clicking to explore mode
- Add folder click to explore mode for Commands
- Fix bug where right clicking on bar has no effect
- Add right click on folder menus
- Add sound to virtual folder menus
- 
- Add menu for ff faves
- Add empty folder lookahead cleanup mode
- 
- Printer button (drag to print), with button to change default printer
- option to auto disable items that are not available currently
- option to read icons from 16bit files.
- 
- taskbar on tree form
- 
- Custom DLL Plugins
- Advanced Scripting
- Advanced Batch Operations using "Drag+Drop Shell Robot" technology.
- Better multimonitor support.
- Hotkey handling.
- 
- ability to center toolbar horiz or vert.
- exit with non-named project crash?
- tab menu style
- add ability to use a file as a "template" which will locate all changes file locations and disables missing files; so that it can be used to share organizations
- merge-only-new command? (ie update/sync).
- auto alphabetize command
- 
- default to only keep minimal icons from load
- 
- fix bug on copy paste file nodes becoming unselectable
- 
- autodetect changes in open file
- fix minimum width limit

**THANK YOU**

- codeproject.com
- DonationCoder.com Forum Members



## 6.3 Related Programs

### Related Applications:

#### Launch Bars

- DC Forum Discussion: <http://www.donationcoder.com/Forums/bb/index.php?topic=2208.0>
- DC Forum Discussion: <http://www.donationcoder.com/Forums/bb/index.php?topic=2037.0>
  - True Launch Bar - <http://www.truelaunchbar.com/>
  - Free Launch Bar - <http://www.freelaunchbar.com/>
  - Advanced Launcher - <http://www.alentum.com/alaunch/index.htm>
  - MenuApp - <http://www.desktopapps.co.uk/menuAppHelp.html>
  - Accessor.Launchbar - <http://www.accessorsoft.com/>
  - Free Launch Bar - <http://www.freelaunchbar.com/>
  - BarLaunch - <http://www.hi-ho.ne.jp/kyagi/enu/index.htm>
  - KwikLaunch - <http://www.markuswelz.de/freeware/index.html>
  - Micro-Sys Launcher - <http://www.micro-sys.dk/products/launcher/>
  - TrayBar - <http://www.nimation.nl/traybar/>
  - Win Menu - [http://www.sventore.com/winmenu\\_desc.php](http://www.sventore.com/winmenu_desc.php)
  - AppPlus - <http://www.appplusonline.com/>
  - YzDock - <http://www.softpedia.com/get/System/OS-Enhancements/Yz-Dock.shtml>
  - RocketDock PunkSoftware - [http://www.punksoftware.com/index.php?option=com\\_content&task=view&id=45&Itemid=143](http://www.punksoftware.com/index.php?option=com_content&task=view&id=45&Itemid=143)
  - StatBar a freeware system monitoring utility - <http://www.statbar.nl/home.php>
  - WinBar a freeware system monitoring utility - <http://www.winbar.nl/index.php>
  - LaunchMate - <http://launchmate.sourceforge.net/index.html>
  - Systray+ - put an icon in the TNA - <http://home.nikocity.de/stefan.schmitz/>
  - TrayMenu by Wei Ke with beta TrayBar - <http://f2.org/archive/software/traymenu.html>
  - H-Menu - <http://home.planet.nl/~vloohdv/homeEN.htm>
  - Horst Schaeffer's PopSel and QSel - <http://home.mnet-online.de/horst.muc/>
  - PS Hot Launch - [http://www.psssoftlab.com/pshl\\_info.phtml](http://www.psssoftlab.com/pshl_info.phtml)
  - XFCE ( a linux window manager app ) - <http://www.xfce.org/>
  - Stardock's ObjectBar - <http://www.stardock.com/products/objectbar/>
  - Micro-Sys Launcher 1.46 - <http://www.micro-sys.dk/products/launcher/>
  - RUNit - <http://www.magister-lex.at/RUNit>
  - Microsoft Research's GroupBar - <http://research.microsoft.com/vibe/groupbar.aspx>
  - PowerPro - <http://powerpro.webeddie.com/>
  - RkLauncher - <http://www.aqua-soft.org/board/forumdisplay.php?f=81>
  - MobyDock - <http://www.mobydock.com/>
  - Skinnables.org freeware skinnable launchbars - <http://www.skinnables.org/apps.php?section=launchers>
  - LaunchTab - <http://launchtab.webhop.net>
  - ShortPopUp - <http://www.digitallis.co.uk>
  - AquaDock - <http://www.openwares.org/file.php?Itemid=29>
  - LaunchIt Now! - <http://gemiscorp.com/english/launchitnowplus/info.html>
  - Toolbox - [http://www.cylog.org/utills\\_4.asp](http://www.cylog.org/utills_4.asp)
  - Appetizer - <http://app.etizer.org/>
  - JetToolbar - <http://www.jetaudio.com/products/jettoolbar/>

Endnotes 2... (after index)

Back Cover